



Track Access News

Issue 11 September 2008

Network Rail Enhancements & Renewals Special

Driving Network Change in 2008

Track Access Training DVD

The unique feature of the Track Access Training DVD is that the disc contains two systems. The first system automatically plays when loaded into a conventional DVD player, the second system utilises the advanced moving map system and plays on PCs and laptops. All our video footage is shot in widescreen Sony High Definition.

Simulation working with Driver Training

The value of simulation grows quickly in the field of UK driver training. Recognition of new potential in this area has been followed up and utilised by Track Access Services on many of the major enhancement and renewal projects recently introduced throughout the UK.

The latest deployments of train simulators now include track building capabilities which enable construction of new track areas which can be used for driver retraining.

Once a model for a new area has been built, it can be driven in many different ways but varying condition in real time such as weather, time of day, seasons, other rail traffic and all manor of signalling conditions.

Routes through a scheme can be driven on simulators but also filmed and combined with standard driver training DVD and computer presentations.

If you are interested in arranging a demonstration with our desktop simulator either onsite at your project or to visit our offices please call Alison Butler on +44 (0) 1462 686248

Seen in the picture below is Sir Moir Lockhead, Chief Executive and Elaine Holt, Managing Director at the official opening of the First Capital Connect Simulator Centre in Hornsey.



Exciting new developments in motion tracking creating a true representation of the railway. See details of Colchester Clacton Project

Early route filming for Signal Sighting

In July 2008 TASERV delivered video footage of Tallington and St. Neots to Network Rail to assist with signal sighting for future resignalling projects. 10 miles of each of the fast and slow lines were filmed for each area. For us seasons and weather conditions are an important factor when forward planning future survey work.



Track
Access

www.trackaccess.co.uk
+44 (0) 1462 686248

New developments in driver route learning

The Colchester – Clacton Project has called for TASERV to extend the scope of what can be achieved through the use of motion tracked graphics and High-Definition video footage, in creating a true representation of the proposed development.

Several firsts have been achieved:

- New facing crossovers have been added to the video
- Level crossings have been changed from gated crossings to full barriers
- Platform extensions have been included, in this case where they have changed from 8 car to 12 car platforms
- Track has been blurred/removed from footage

The video footage for the Colchester Clacton project has been altered to include over 270 new signals and signs and has had over 250 existing signals and signs removed.

Extensive remodelling of Clacton station has been represented by a fully detailed Virtual Reality model to show the new track layout and platform extensions.



New Facing Crossover



Track Blur



New Full Barriers



Before Platform Extensions



After Platform Extensions

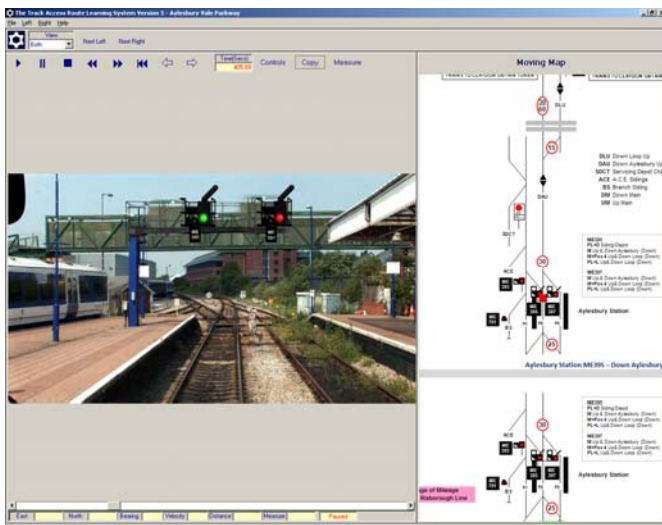
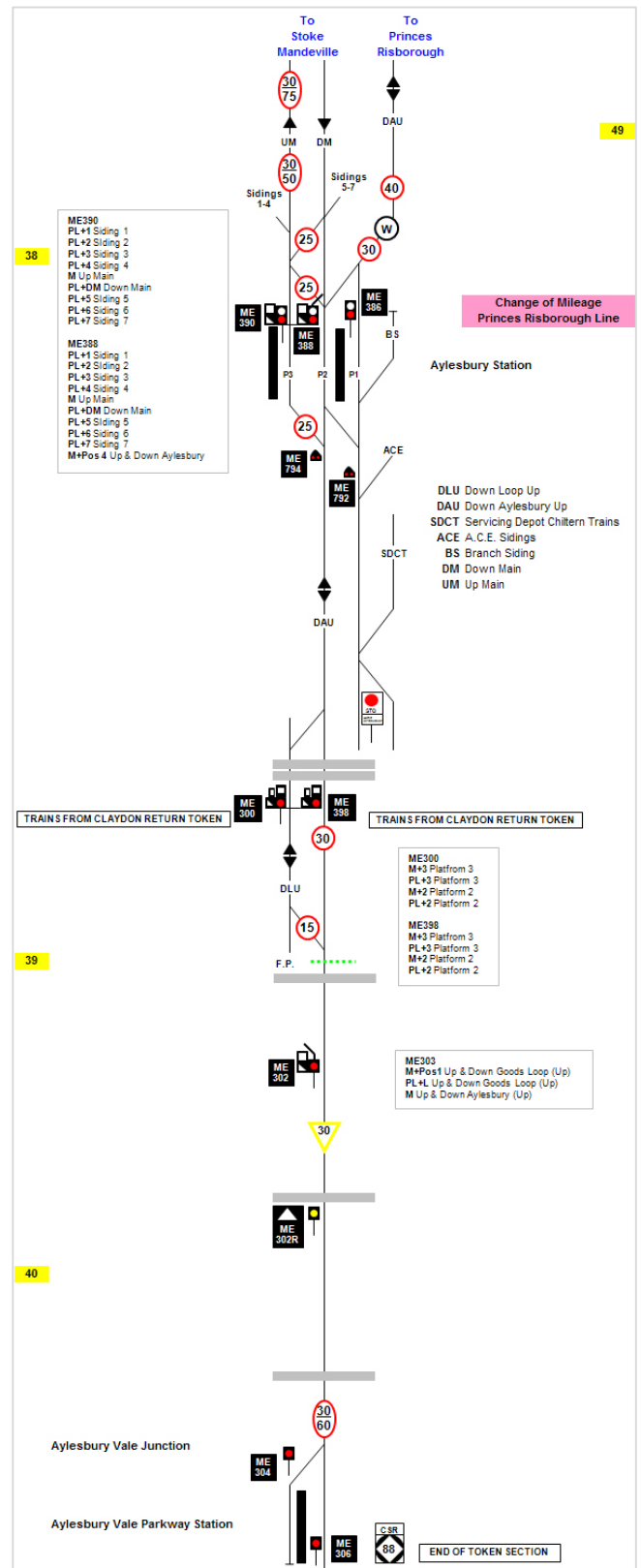
Aylesbury Vale Parkway Project

The Aylesbury Vale Parkway project consisted of 2 miles of track being renewed for use for passenger trains instead of freight only. This included a new station, Aylesbury Vale Parkway.

TASERV were the preferred supplier of Driver Route Learning for this project after previous successful projects including Evergreen 2.

Approximately 24 signals and signs were removed and 37 signals and signs were tracked onto the video footage. This was then placed into the TASERV Route Learning system and linked with a moving map facility.

Aylesbury Vale Parkway project was completed and delivered in September 2008 as a 1 disc set with printed map.



Aylesbury Vale Parkway Route Learning System

Aylesbury Vale Parkway Route Map

Network Rail projects

Gretna Annan Re-Doubling of Line

8 miles of highly detailed VR model. Delivered 2008 as a 1 disc set with printed map.

Lincoln Station Area Signalling Renewals and Track Remodelling

3 disc set of Route Learning Systems with printed map. Approximately 52 new signals, new PLS, new signs and furniture were added to the video footage while 38 signals and signs were removed. Lincoln Station Area was built as a complete VR Model with fully operational signalling logic. A total of 1 ½ miles of new track was accurately constructed along with the surrounding landscape including buildings and vegetation. Delivered 2008.

Low Row Brampton Fell

1 Disc set with printed map, approx 17 new signals tracked and 17 signals removed. Delivery November 2008.



To discuss any requirements don't hesitate to contact Alison Butler on +44 (0) 1462 686248 or +44 (0) 7729 456454

Alison Butler

Other TASERV projects

First Capital Connect

Track Access Services have been working closely with First Capital Connect to film and map their entire network including Bedford to Brighton, King's Lynn to London, Hertford Loop, To/From Sutton and To/From Moorgate.



Heathrow Express

TASERV are currently working with Heathrow Express to update their existing driver training to include Terminal 5 and changes made at Airport Junction. Maps have been update and linked to footage filmed summer 2008. TASERV are also working with HEX to build a Route Risk Mapping Manual.

Ireland

Throughout the year TASERV have been updating Route Learning systems and maps of the Ireland Network including resignalling between Dublin and Greystones. New additions to the Ireland Route Learning library are Ballybrophy to Limerick & return and Rosslare Strand to Big Grange Level Crossing & Return.

Northern Ireland

TASERV have been working with NIR to produce mapping manuals and develop NIR's Sectional Appendix.