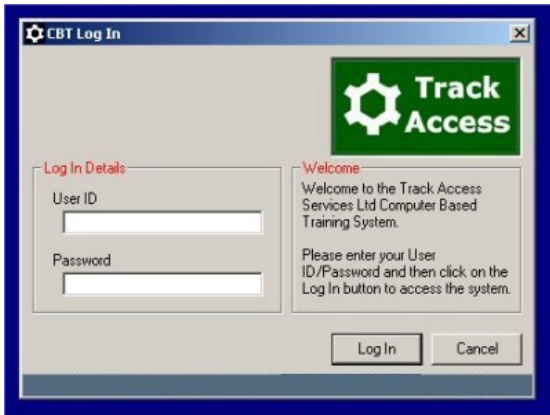


Computer Based Training and Assessment

Try the CBT WEBSERVER OnLine

If you are running Microsoft Windows XP, to obtain a login username and password, plus instructions

Email : CBT-WEBSERVER@trackaccess.co.uk (State the following: Name, Company, Job Title, Telephone)



Available as:

ONSITE system: to run within company IT systems

WEBSERVER operated by TA Services

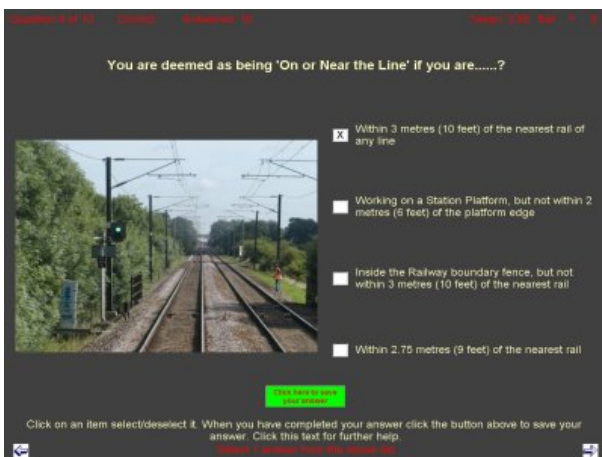
Track Access CBT Details

The CBT System has three components:

A CBT Server which stores all data and content.

The Trainer Station which connects to the server for system administration and content maintenance.

The Student Station which connects to the server for running tutorials and assessments.



Our Computer Based Training is installed for 'one Railway' and First Scotrail & First Capital Connect for Driver Training & Assessment.

Track Access Computer Based Training has been designed by TA as a package which is both easy to use and implement. It is a web based system with a clear full screen display which can be navigated by the student.

Individual assessments can be simply created and amended as needed. Questions can be multiple choice with or without media content which can include photographs, graphics, videos and sounds. Existing material e.g. PowerPoint presentations can be incorporated. Questions can also be set to have a certain time limit.

Answers can be automatically marked and trainers can review the answers at the end with the student.

Task	Description	Type	Completed	Score	Max. Score	Pass Mark
PTS	PTS	Practice		0	0	70
PTS	PTS	Practice	02/09/2008 12:28	1	13	70
AC	AC	Practice		0	0	70
PTS	PTS	Practice	02/09/2008 12:28	15	15	70
AC	AC	Practice	02/09/2008 12:19	10	10	70
PTS	PTS	Practice	02/09/2008 12:16	13	13	70
PTS	PTS	Practice	02/09/2008 06:56	16	16	70
AC	AC	Practice	02/09/2008 06:03	9	10	70
PTS	PTS	Practice	02/09/2008 20:38	15	15	70

With the Track Access Computer Based Training Package you can:

- Create training material to teach/refresh students skills.
- Create assessments and questionnaires to test students skills.
- Record the results of assessment questionnaires.
- Review the results of assessment questionnaires.
- Replay assessment questionnaires.
- Produce printed documentation of assessment results.
- Analyse students performance.
- Analyse the tasks assigned to groups of students.
- Analyse the questions used within questionnaires.
- Enable students to securely access and use the training materials and questionnaires assigned to them.

E Learning for the future



email david.reed@trackaccess.co.uk at Track Access Services Limited - www.trackaccess.co.uk
St. Christopher House, 126 Ridge Road, Letchworth Garden City, Hertfordshire, SG6 1PT
Tel: +44 (0)1462 686248